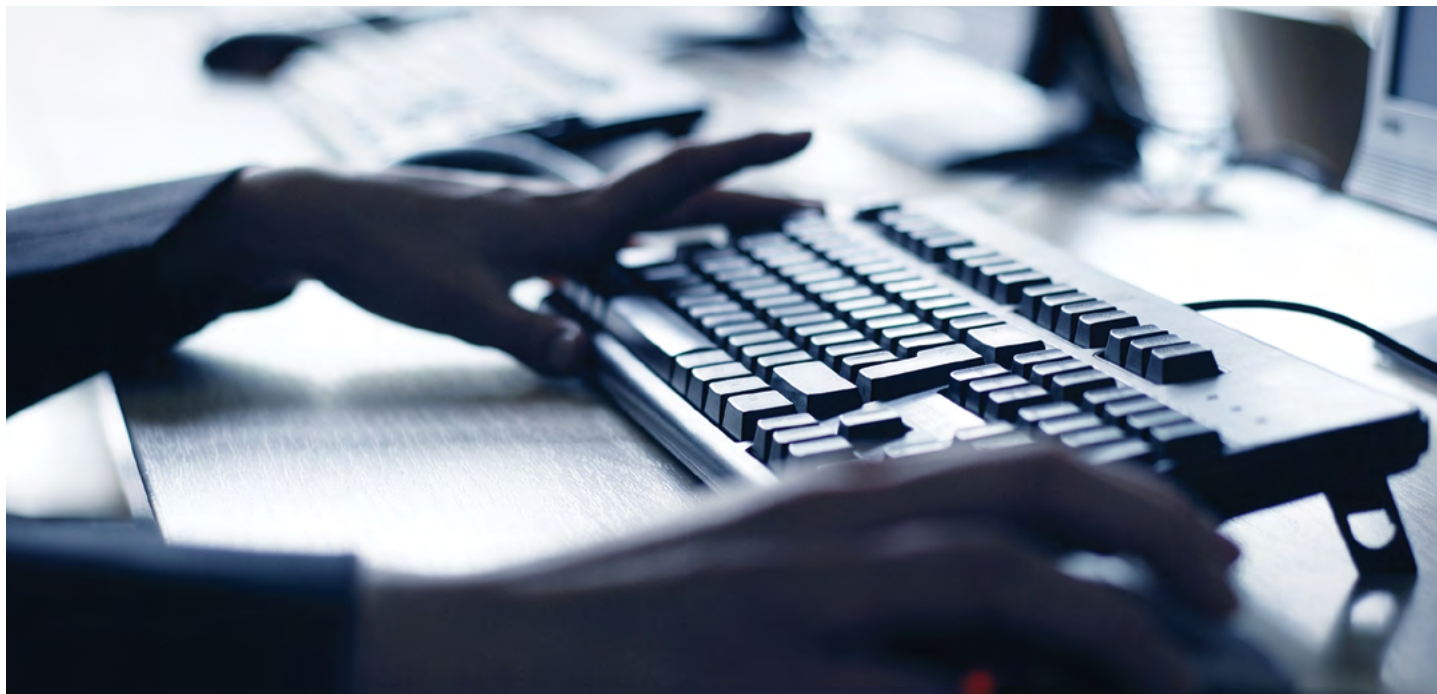


DSE TRAINING AND ONLINE ASSESSMENT



All employers in the UK have a legal obligation to provide Display Screen Equipment (DSE) training and assessment for all employees who use computers regularly for work. This obligation extends to the home workstations of staff who work from home part-time or full time.

This assessment is highly important for the well-being of your employees, as the incorrect use of DSE can result in musculoskeletal disorders and repetitive strain injuries. Skillcast offers an effective solution to fulfil this obligation.

Skillcast offers a two-part solution, comprising of e-learning and online assessment. The e-learning module helps your staff to build and evidence competence in the correct use of their computer workstation, as per the Health and Safety Executive (HSE) guidelines. The online assessment questions them on the critical points provided by the HSE and creates alerts if they report any non-compliance. The relevant managers can check these alerts in the case management reports and resolve and comment on the underlying issues before closing them.

With this package, you can provide DSE training and assessment to your staff on a more timely basis and avoid logistics of scheduling DSE assessments. You can also identify issues being flagged up by multiple employees and take proactive action to prevent them from becoming more widespread.

The Skillcast DSE training and assessment enables you to:

- Train your staff on the correct use of devices for their health and safety
- Spot and resolve any issues with workstations before they can cause harm
- Identify any widespread problems that require an organisational response
- Comply with the DSE Regulations